



Photo Credit: Boo George

Art on Display at The Pygmalion

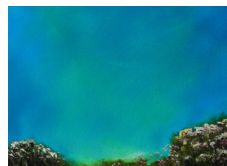
Sarah Walker
Artist

Sarah Walker is a painter living and working on the Beara Peninsula, West Cork. Growing up in Dublin where she studied Fine Art, she moved to live in Beara in 1991. Well known for her paintings of wildflowers in the landscape where she lives, her work has been described as “evidence of a life lived close to brambles, trees, country roads, spring and winter air. Walker’s art filters nature with a connoisseur’s eye, thereby giving it a fine aesthetic pedigree.” Brian O’Doherty, Representing Art in Ireland.

Sarah has received numerous awards from the Arts Council and the Cultural Relations committee to exhibit abroad and hold residencies in the US, Japan, and Mexico. She has been involved with the Cill Riallaig Project in Co Kerry since 2005 and was on the panel of curators for the RDS Visual Arts Awards Exhibition 2016. The Derrynane Meadow is the largest painting of her collections to date.

Visit Sarah Walker Gallery on the pier in Castletownbere, Co Cork

sarahwalkergallery.com



Sea Pinks Rock

Sea pinks also known as sea thrift grow all around the rocks locally in May. And in June you will come across the bog cotton flowers depicted in some other paintings in the Restaurant.



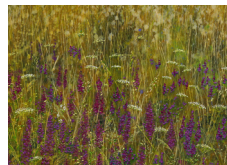
Wildflowers Collection

The three framed paintings are of three types of wildflowers:- Bee’s Nest, Angelica and Violets, which are found abundantly in the locality in Spring and Summer.



Sheer Bull Rock

Is a large painting of the spectacular rocky island called “Bull Rock” with its famed archway often referred to as “Gateway to the Underworld” located 9kms off the Southwestern tip of the Beara Peninsula.



Willowweed Angelica

The small painting; Willow-weed Angelica, is a perfect depiction of these wild flowers in bloom during late Summer and early Autumn.





Derrynane Meadow

Commissioned by Parknasilla Resort in October 2022 especially for the newly renovated Pygmalion Restaurant. The painting breathes the air of Derrynane with its wild montbretia, meadowsweet, cow parsley, devilsbit and willow-weed growing across the stretch of the Canvas.

